

# Innovation in Automation

The BTX roller shade program features a full line of systems custom built from start to finish. Covering a wide range of applications, each shade is manufactured on demand to work for a specific project and environment. BTX combines a simple, streamlined presentation with some of the strongest and most versatile motorized hardware systems in the industry to deliver unquestionable power and reliability.

BTX systems incorporate AC and DC motors that are both flexible and powerful. These can be used with 1.5", 2" and 3" tubes and can be configured for residential and hospitality environments, as well as for many commercial buildings. The various motors available host an assortment of features including silent operation, solar power and internal radio control.

No matter which configuration you choose, BTX has the shade for you.

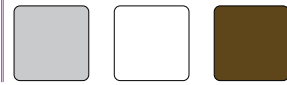


#### FASCIA / ENCLOSURE

- Enhances room-darkening effect
- Hides motorization hardware
- Easy to install

#### COLOR OPTIONS

- Silver (standard)
- White
- Bronze
- Custom powder coat



#### FABRICS

- Solar screen or blackout
- Wide range of colors available
- Hundreds of combinations
- Common styles include:
  - Phifer
  - 3G Mermet
  - Sorina
  - Vertilux

#### MOTORS

- See options below

#### CONTROL METHODS

- 6-channel radio handsender
- Wired or wireless wall-switch
- Network integration

#### TUBE

- 1.5" (RS-15)
- 2" (RS-20)
- 2.5" (RS-20)
- 3" (RS-30)

Solar panel



*Your Imagination.*  
Our Innovation.

## The New Standard in Automation



The overwhelming trend over the last few years has been in the improvement of products based on three key factors: accessibility, sustainability and over all simplicity. BTX has been working diligently to ensure that all these features become standard in the BTX motorization program. The roller shade line of BTX is a prime example of this commitment to raising the bar. With the new BTX control platform, BTX motors can cross-communicate with each other via an internal radio module. This reduces the necessity for external controls modules. BTX also offers a solar powered roller shade motor that is self-sustaining, subject to sun exposure criteria. With products like these, BTX stays a step ahead and continues to solidify its place as an industry leader now and for many more years to come.

## Common Controls and Features



6-channel RF Handsender



Modular Surface-Mount Wireless Wall Switch Adaptable 1-5 Channels



Network Control



Plug-and-Play

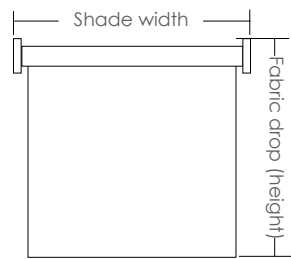
BTX Motors	Product Type	Max Weight	Max Width	Max Height	Max Width (coupled)	Max Height (with fascia)	Voltage	Built in Control
DC-B-25-08-25	RS-10	7 lbs.	60"	72"	n/a	72"	24V DC	n/a
AC-B-35-6-30	RS-15	50 lbs.	96"	108"	n/a	108"	120V AC	n/a
AC-B-45-10-42	RS-20	65 lbs.	144"	204"	360"	180"	120V AC	n/a
AC-B-45-10-22-RF	RS-20	65 lbs.	144"	204"	360"	180"	120V AC	RF
AC-B-45-20-42-HD	RS-20 / RS-30	125 lbs. (RS-20) 100 lbs. (RS-30)	180"	264"	360"	180" (RS-20 only)	120V AC	n/a
DCS-B-45-2-42	RS-20	16 lbs.	144"	108"	n/a	108"	DC Solar	RF, Contact Closure
DC-B-45-2.5-18-RF	RS-20	20 lbs.	144"	108"	360"	108"	24V DC	RF, Contact Closure

## Features

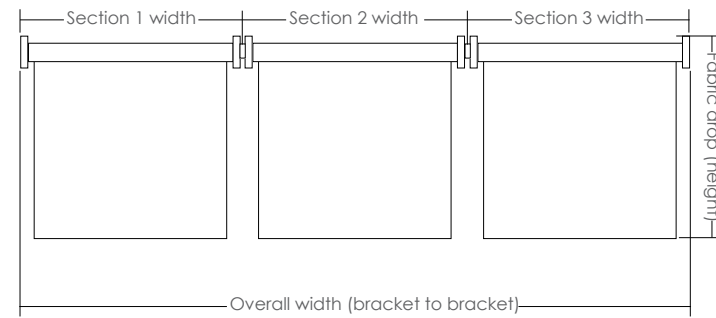
- Compact tubular motors with their strengths precisely matched for system size
- Choice of AC or DC tubular motors
- Integrated radio (RF) control or external controls available based on motor type
- Adjustable or snap-in mounting brackets
- Mechanical or electronic limits based on motor type
- Single panel or coupled systems available
- Wide selection of optional solar screen and blackout fabrics
- Optional color-coordinated fascia cover
- Optional color-coordinated, light-blocking hardware: backplate, side & sill channel/angle
- Standard or reverse roll
- Motors are UL and CSA certified

## System Configurations

### Standard Systems

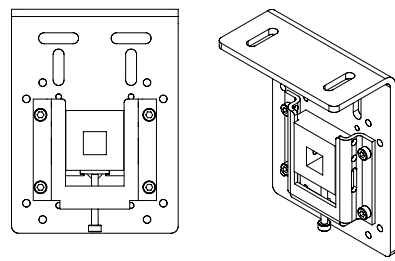


### Coupled Systems

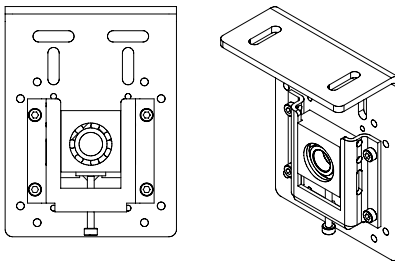


## Installation Hardware

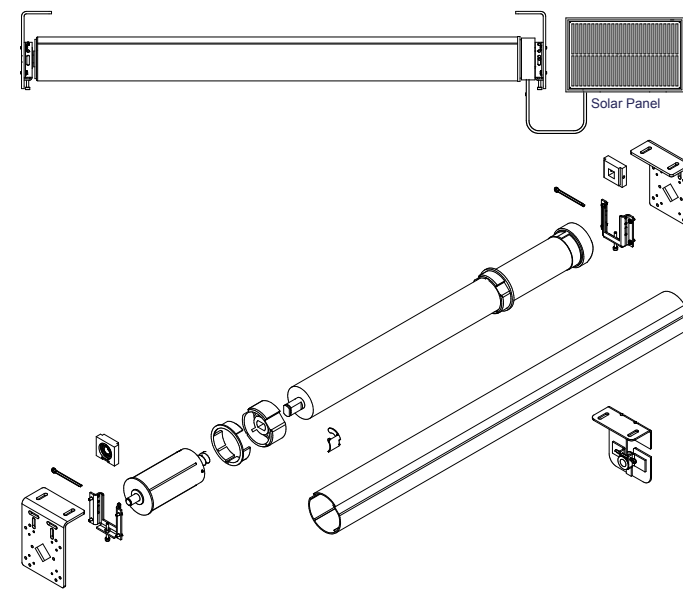
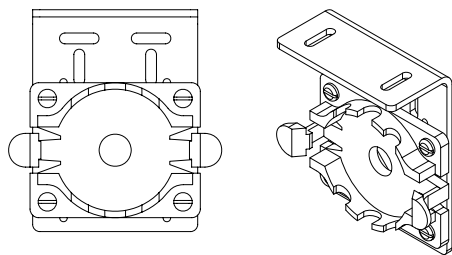
### Adjustable Motor Bracket



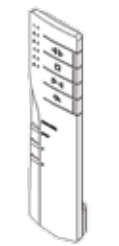
### Adjustable Idler Bracket



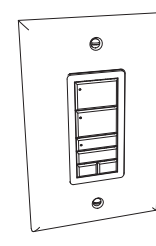
### Snap-In Motor Bracket Flush Mount



### Optional Wall Switches



6-Channel RF  
Handsender



Modular Surface-Mount Wireless Wall Switch  
Adaptable 1-5 Channels



10763 Sanden Dr., Dallas, TX 75238  
Phone: (800) 422-8839 or (214) 340-2800 | Fax: (214) 343-2252  
www.btxinc.com | btxwindow@btxinc.com

# BTX



## Roller Shade Automation Systems

Authorized Dealer