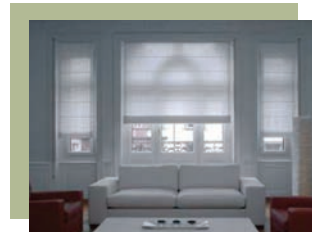
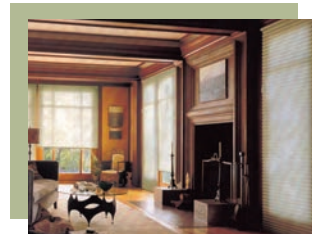


Motorized Systems...



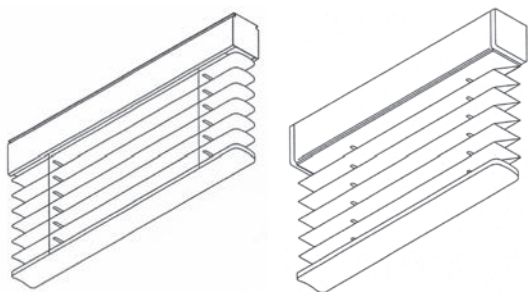
CTS Lift/Tilt System



Lancaster & Associates
INCORPORATED

www.lancasterandassoc.com

CTS Motorized Lift/Tilt System for Horizontal Blinds, Pleated Shades, and Roman Shades

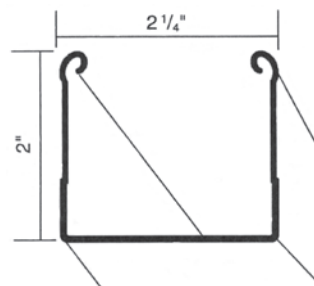


FEATURES

- Compact Cassette encases motor and electronic options.
- Low Voltage and Line Voltage motor options.
- Special take-up spools assure constant level operation. Uses standard lift cords.
- Wide variety of control options.

DESCRIPTION

Painted steel "Gutter rail" cassette is offered in white or ivory. Custom painted headrails are available upon request. Box brackets for inside and wall mounted applications. Swing-clamp for pocket installation. Motors have adjustable built-in limit switches.



SYSTEM PARAMETERS

Low Voltage 12V DC and 24V DC motors for small pleated shades and tilt-only applications.

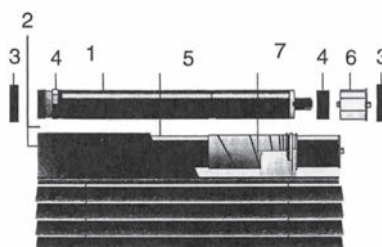
- Minimum Width = 18"
- Maximum Width = 96"
- Maximum Length = 96"
- Maximum Weight = 10 lbs.

Line Voltage 110V AC motors will allow for tilt and lifting of horizontal blinds. Large pleated shades, multiple shades and medium weight Roman shades can be fitted to this system.

- Minimum Width = 22" (without headrail control)
- Maximum Width = 192"
- Maximum Length = 180"
- Maximum Weight = 60 lbs.

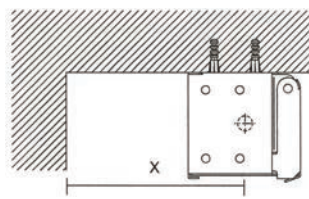
CONTROL OPTIONS

Built-in headrail controls include: Infrared, RTS (RF), Contact closure, RS-232, Isolating Relays and more. Individual and group controls are also available.

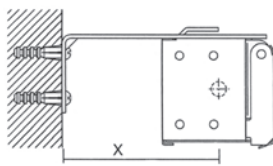


1	Motor
2	Headrail
3	Motor & Idler Bracket (2 pcs)
4	Crown & Drive Wheel Set (2 pcs)
5	Octagonal Tube
6	End Cap
7	Cone & Cradle Set (2 pcs)

APPLICATIONS



Ceiling Mount

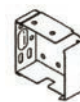


Wall Mount

Wall/Ceiling Mount Brackets



Left



Right



Swing Clamp



Lancaster & Associates
INCORPORATED

10910 Alder Circle • Dallas, TX 75238 • ph (214) 340-0359 • toll free (888) 258-1676
fax (214) 340-3108 • www.lancasterandassoc.com • email: info@lancasterandassoc.com